

# Samba medley

## Sókkerpop (Suikerbossie)

Two staves of musical notation for the piece 'Sókkerpop (Suikerbossie)'. The first staff begins with a 4/4 time signature and a key signature of two flats. The melody consists of eighth and quarter notes. The second staff contains two first endings, labeled '1.' and '2.', which lead to a repeat sign and a final cadence.

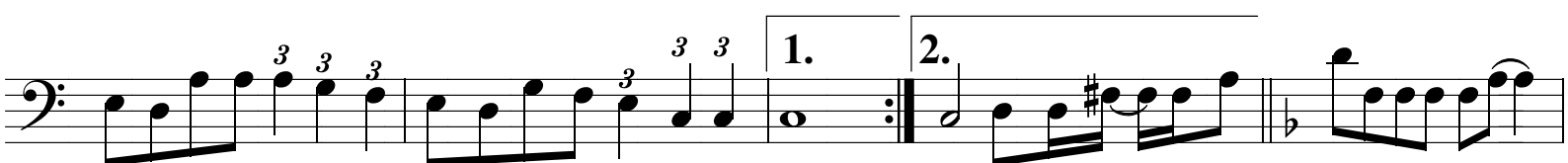
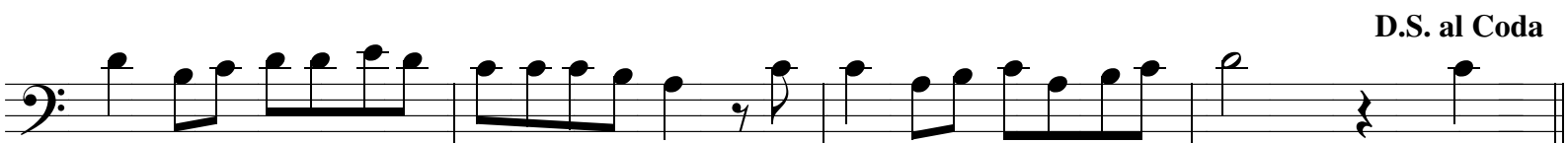
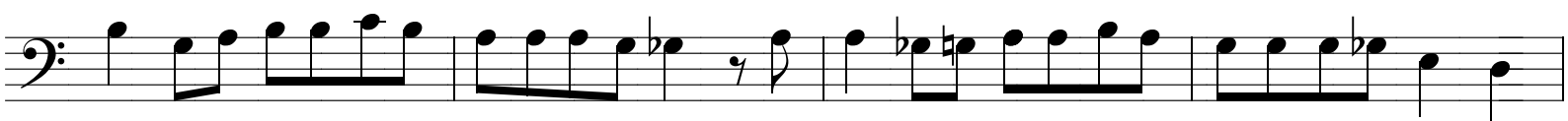
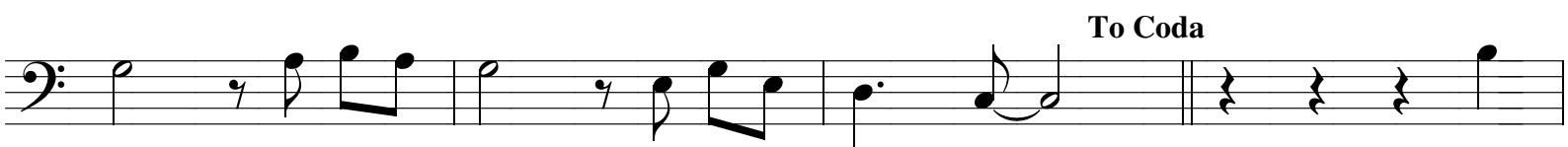
## Wat 'ne poen (Oh, what a kiss)

Five staves of musical notation for the piece 'Wat 'ne poen (Oh, what a kiss)'. The notation features a complex bass line with numerous triplets of eighth notes. The first ending is marked with a '1.' and leads to a repeat sign. The second ending is marked with a '2.' and leads to a final cadence.

## Awhoor, awhoor (Amor)

Two staves of musical notation for the piece 'Awhoor, awhoor (Amor)'. The first staff begins with a 2/4 time signature and a key signature of two flats. The melody is characterized by eighth notes and rests. The second staff continues the melody with eighth notes and rests.

# Samba Medley



Sjöd nog e pèlske in (Yano digas)



Dans de Samba (Tristeza)

