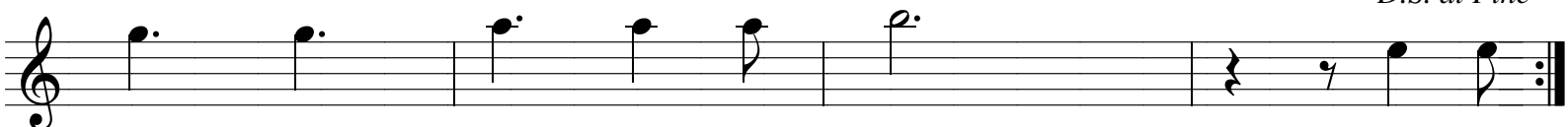
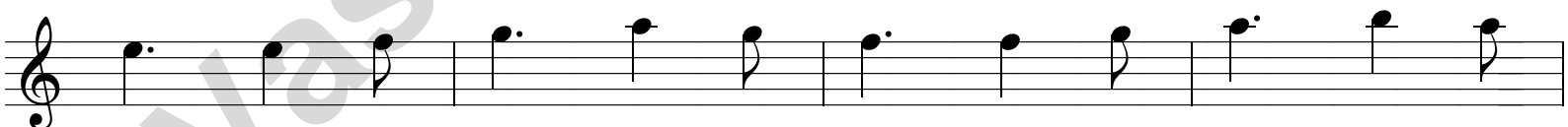
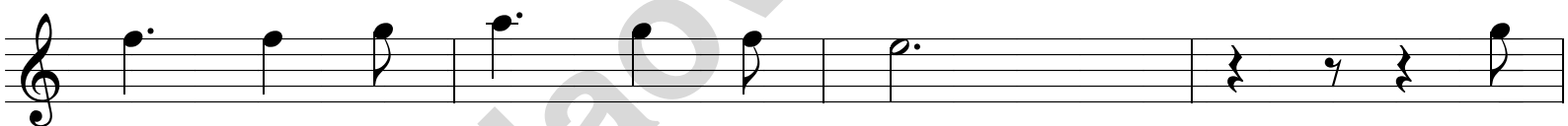
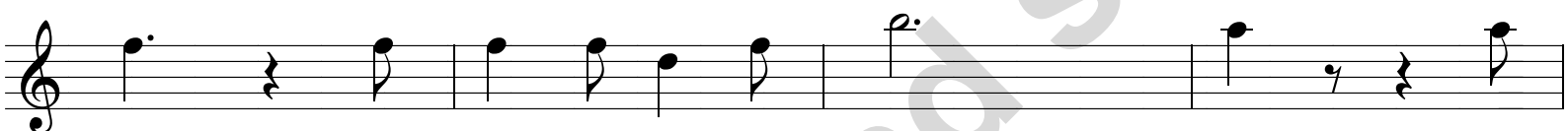
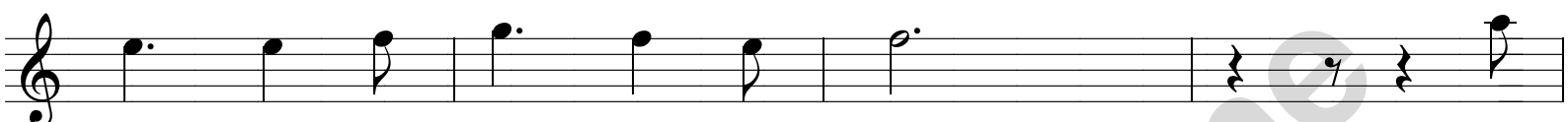


Stad Mestreech

A musical score for the piece 'Stad Mestreech'. The score is written on ten staves, all using a treble clef. The first staff begins with a treble clef and a 3/4 time signature. The second staff starts with a repeat sign and a first ending bracket. The music consists of a series of notes, including quarter notes, eighth notes, and dotted notes, with some rests. A large, semi-transparent watermark 'Vasteland Same' is overlaid diagonally across the middle of the page. The word 'Fine' is written above the final note of the tenth staff.

Stad Mestreech



D.S. al Fine